

CONNECTICUT UNITED WAYS



2020 POLICY AGENDA

WE STAND WITH ALICE®

LIVE UNITED

More than 400,000 Connecticut households (30% of all households) have income above the federal poverty level but below a basic cost of living. Connecticut United Ways call these households ALICE® (Asset Limited, Income Constrained, Employed). We remain committed to helping ALICE families achieve a more secure financial future.

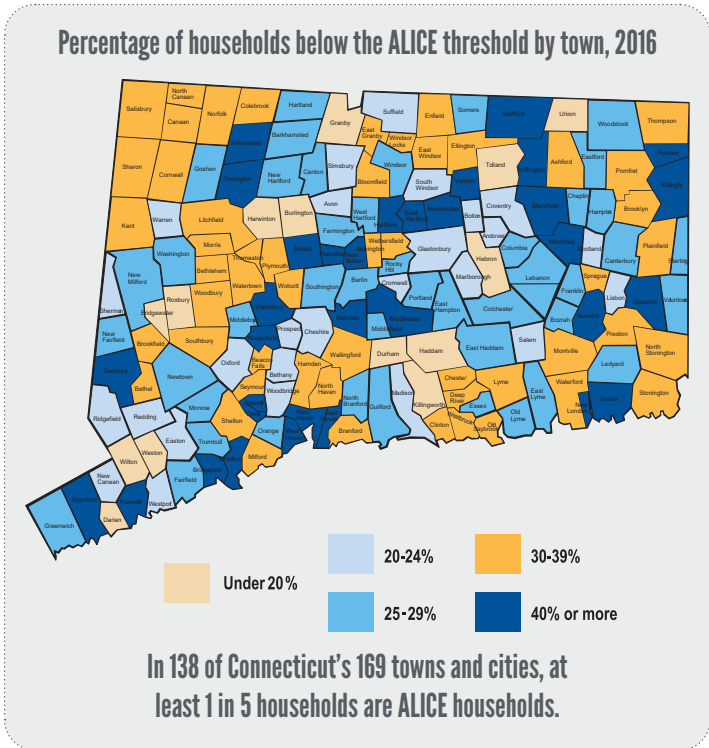
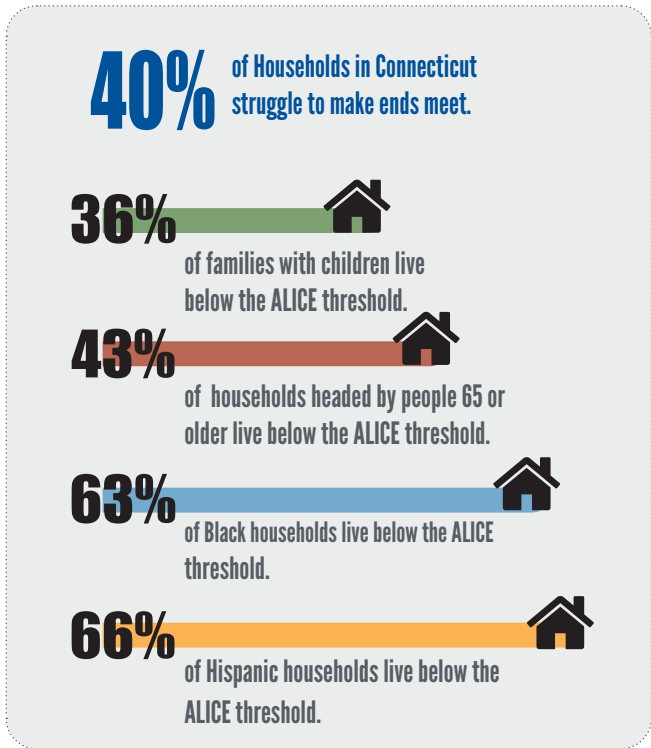
For ALICE households, low wages, tight budgets and limited savings often mean making tough financial choices. Working parents choose between quality child care and healthy food for their children. Young adults juggling multiple jobs with inconsistent schedules choose between expensive rent and a long commute to work. Older adults weigh whether to ignore a car repair or forgo a needed trip to the doctor.

DO YOU KNOW ALICE?

ALICE is our friend, neighbor, coworker and family member. ALICE cares for our children and aging parents, fixes our cars, works in our local grocery stores, retail stores and restaurants and much more. ALICE lives in every town and city in Connecticut.

Connecticut United Ways remain committed to supporting ALICE and fighting for the health, education and financial stability of all Connecticut residents. We ask that you join us in this work so that ALICE families in Connecticut can secure a brighter future and Connecticut can look forward to a strong and prosperous future.

ALICE LIVES AND WORKS IN EVERY TOWN



POLICY RECOMMENDATIONS

Connecticut United Ways advocate for good jobs, fair wages, access to good schools, affordable housing, and quality child care that families can afford.

Last year Connecticut United Ways invested more than **20 million dollars** in child care, early learning, youth success, basic needs, job training, asset development and financial education.

EDUCATION

The path to a successful future begins with quality child care, opportunities for youth success and the ability to pursue a good education.



- Support more funding for early care and education and improve access to reliable, affordable and quality child care. (i.e. Care 4 Kids)
- Expand resources for child care providers to meet the scheduling needs (including more second shift and weekend hours) and job demands of working parents and the developmental growth of their children.
- Invest in initiatives that enable more children to read at grade level by the end of 3rd grade.
- Promote pathway programming in high school that provides connections to further education (e.g. Community colleges, job apprenticeships, certifications/credentials) and good jobs.
- Invest in systems that ensure children across all communities have a clear path to economic prosperity through family, education, community support and opportunities (e.g. Cradle 2 Career).

FINANCIAL STABILITY/ECONOMIC MOBILITY

Access to good jobs, affordable housing and asset building resources will allow ALICE households to work towards a more secure financial future.



- Bridge the gap between stagnant wages and the growing cost of raising a family by funding programs that enable families to meet basic needs and succeed (e.g. Care 4 Kids and HUSKY health care).
- Implement systems changes in service delivery to better coordinate child care, adult job training and works supports and other services to support the whole family (Two-Gen).
- Support workforce development to address skills gaps and better align with the needs of leading and emerging industries.
- Increase investments in non-degree technical courses that earn industry recognized credentials and/or stackable credits in leading and emerging industries.
- Promote employer focused training programs that train new employees and provide opportunities for

“upskilling” to allow current employees to increase their skills and earn higher wages.

- Increase funding for housing and homelessness services including Coordinated Access Networks, rapid rehousing, rental subsidies, and flexible funding for shelter diversion efforts to sustain Connecticut’s leadership in ending chronic homelessness.
- Reduce the number of housing burdened residents through investments in affordable and appropriate mixed housing options that allow families the ability to live close to jobs and cover the cost of basic needs.

HEALTH

There is a growing awareness that social and economic factors have a significant impact on an individual’s ability to lead a healthy life. Access to nutritious food, stable housing, reliable transportation, and mental health services greatly influence ALICE’s health outcomes.



- Increase access to affordable health insurance and quality health care.
- Promote health equity- attainment of the highest level of health for people of all races, ethnicities and income levels.
- Decrease the number of Connecticut households that are food insecure through investment in access to healthy food.
- Streamline access to health and human services, and provide coordinated and consistent access to services by maintaining and growing support for 2-1-1.

Community

- Protect the tax exemption status of nonprofits that serve the most vulnerable populations across the state.



If you have questions or would like to discuss this policy agenda, please contact:

*Richard Porth, CEO
United Way of Connecticut
(860) 571-7501 or Richard.Porth@ctunitedway.org*