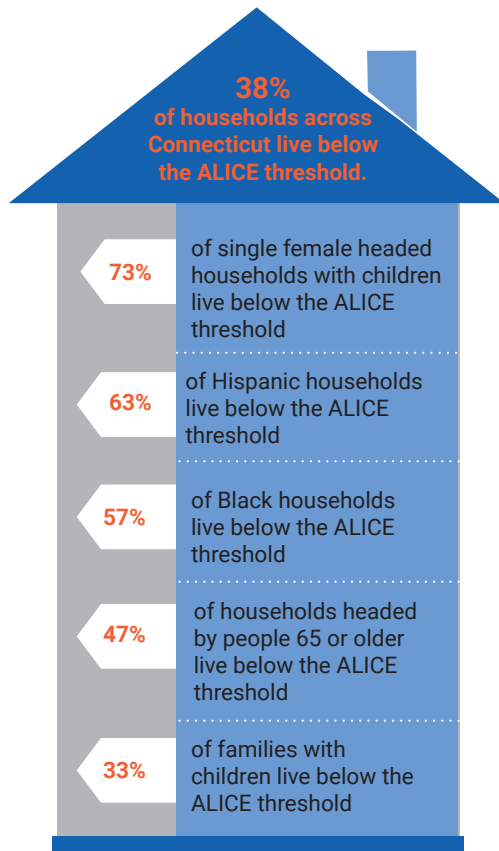


## 2022 POLICY AGENDA



Even before the onset of the COVID-19 Pandemic, 38% of Connecticut's households lacked the income to pay for necessities such as housing, food, child care, health care, technology and transportation. United Way calls these households **ALICE**, an acronym that stands for **A**sset **L**imited, **I**ncome **C**onstrained, **E**mployed. Connecticut United Ways are committed to helping **ALICE** families achieve a more secure financial future.

### YOU KNOW ALICE

**ALICE** is the essential health care worker caring for our aging parents at home and for COVID patients in our hospitals. **ALICE** is the teaching assistant who helped our children adapt to virtual learning, or the bus driver who gets our kids to school. **ALICE** fixes our cars and works in our local shops and restaurants.

The COVID-19 Pandemic and resulting economic crisis has disproportionately impacted households living below the **ALICE** threshold and depleted the savings of CT families who were living above the ALICE threshold prior to COVID-19.

#### ■ SUPPORT PARENTS AND CAREGIVERS WHO WORK

- ✓ Maintain the CT Earned Income Tax Credit (EITC) at 41.5% to provide struggling working households with income to meet basic needs.
- ✓ Establish a state Child Tax Credit (CTC) at 30% of the federal to offset the cost of caring for a child or dependent with disabilities.
- ✓ **For every EITC dollar a recipient earns, they return \$1.24 to the economy; for every CTC dollar, they return \$1.38.\***

#### ■ ELIMINATE ASSET TESTS FOR TEMPORARY FAMILY ASSISTANCE (TFA) ELIGIBILITY

- ✓ Asset limits disincentivize savings and exclude families who own a reliable car that provides needed transportation to get to and from work and access critical services (childcare, grocery stores, medical care).
- ✓ **Eliminating onerous paperwork can significantly save public funds by reducing administrative costs.**

#### ■ PROVIDE HOUSEHOLDS IN DEEP POVERTY CRITICAL SUPPORT

- ✓ Align eligibility for Temporary Family Assistance (TFA) and HUSKY C with federal poverty levels.
- ✓ **Current eligibility provides income support for only 22% of CT families in deepest poverty and denies health insurance to many aged, blind, and disabled.**

\* Moody's Fiscal Multiplier Estimates

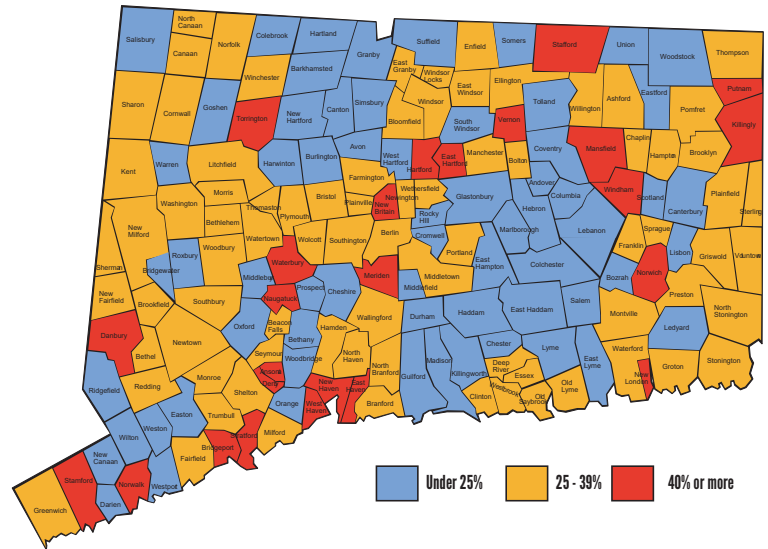
# WE STAND WITH ALICE®

The existing safety net does not adequately support households that live below the **ALICE** threshold. Connecticut United Ways are committed to supporting **ALICE** and fighting for the health, education, and financial stability of all Connecticut residents.

With a focus on equity, Connecticut United Ways invest in child care and early learning, basic needs, job training, asset development, and financial education. We advocate for good jobs, fair wages, access to good schools and affordable housing. And we stand ready to help **ALICE** households when disaster strikes.

[Click on the map to explore ALICE Data in your municipality and legislative district.](#)

## ALICE LIVES AND WORKS IN EVERY TOWN



### FINANCIAL STABILITY

*Access to good jobs, affordable housing, and asset-building resources will allow ALICE households to work towards a more secure financial future.*

- Bridge the gap between stagnant wages and the growing cost of raising a family. Improve service delivery and better coordinate child care, job training, and work supports that will lead to success for the whole family.
- Support equitable pathways for career opportunities that meet employers' needs and provide wages that support families including through Connecticut's Workforce Strategic Plan.



### HEALTH

*Social and economic factors (access to nutritious food, stable housing, reliable transportation, and mental health services) greatly influence ALICE's health outcomes. The COVID-19 pandemic has highlighted that accessible mental health services for people of all ages are essential.*

- Expand access to mental health education resources, preventative care, treatment, and crisis intervention.
- Streamline access to health and human services, and provide coordinated and consistent access to services by maintaining and growing support for 211.



### EDUCATION

*The path to a successful future begins with access to affordable, quality child care, opportunities for youth success, and the support needed to pursue a good education.*

- Support more funding for early care and education and improve access to reliable, affordable and quality child care including through the State's Care 4 Kids childcare subsidy.
- Invest in systems that provide for children across all communities a clear path to economic prosperity through education; invest in initiatives that enable more children to perform at grade level.



**If you have questions or would like to discuss this policy agenda, please contact:**  
Amy Casavina Hall | United Way of Connecticut | (860) 571-7500 or [Amy.CasavinaHall@ctunitedway.org](mailto:Amy.CasavinaHall@ctunitedway.org)