

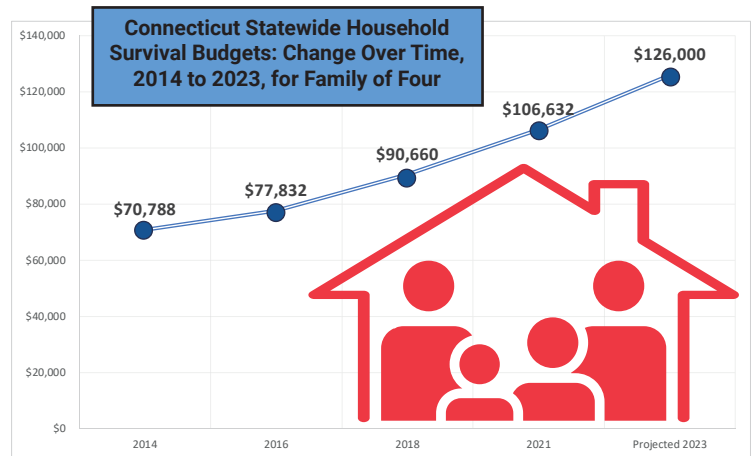
# Connecticut United Ways 2024 ALICE Policy Agenda

**ALICE** stands for **A**sset **L**imited, **I**ncome **C**onstrained, **E**mployed. In Connecticut, 39% of households live below the ALICE Threshold, the minimum amount of income needed to live and work in the modern economy.

## 1 CREATE A PERMANENT, FULLY REFUNDABLE CONNECTICUT CHILD TAX CREDIT (CTC).

- The situation is urgent. Since 2021, the ALICE Essentials Index shows 18% inflation in the cost of household basics. This blow is combined with the loss of pandemic-era federal benefits that supported ALICE families.
- A 100% refundable credit means that families who do not have a tax liability would receive the full value of the credit.
- Eligibility: up to \$100,000 annual income for a single filer, \$200,000 for joint filers.
- Estimated cost of a child tax credit of \$600 per child up to three children: \$300 million per year (*individual family benefits and total policy cost depend on income phaseout schedule*).

A permanent CT CTC of \$600/child would provide dependable, flexible income to approximately 250,000 CT households and 350,000+ children.



## 2 CONTINUE FREE, HEALTHY SCHOOL BREAKFASTS FOR ALL CONNECTICUT STUDENTS AND LEVERAGE FEDERAL FUNDS TO EXPAND NO-COST SCHOOL MEALS.

Our kids should have what they need to learn. Providing students with adequate nutrition is essential for success in school, just like school buses, textbooks and technology.

- Annualize the \$16 million allocated in the 2023/24 school year to provide no-cost school breakfast for all Connecticut students in participating districts.
- Leverage federal funds to cover most of the cost to expand no-cost school meals — state funds fill only the gap between federal reimbursement and actual costs.

No-cost school meals help ensure Connecticut kids are ready to learn and have the nutrition needed to be healthy.



3

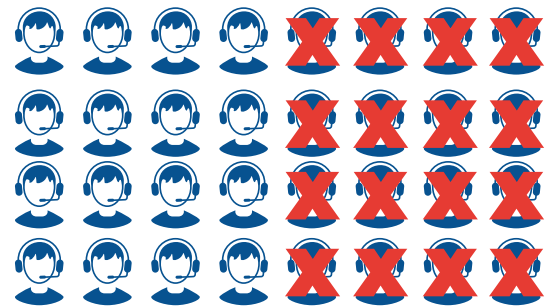
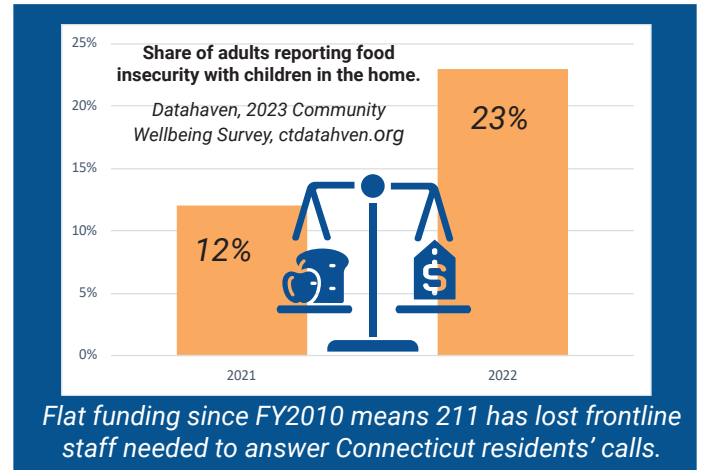
INVEST IN 24/7/365 ACCESS TO MORE THAN 40,000 BASIC NEEDS RESOURCES FOR CONNECTICUT RESIDENTS.

211 I&R is an essential “one stop shop” connecting residents to multiple resources to meet their urgent needs.



- Steep increases in prices, increased levels of need: people are turning to 211 for help more than ever.
- 211 is a “force multiplier” maximizing public and private basic needs supports available right now for Connecticut residents.
- An additional \$1.25 million in new funding would allow 211 I&R to:
  - Serve more residents to meet current demand
  - Decrease hold times

Food insecurity has nearly doubled for families with children, while 211 frontline staff has decreased.



Connecticut United Way's 2023 ALICE Report is a data-driven, comprehensive research report that provides a look at financial hardship for households across Connecticut that are **ALICE** -- **A**sset **L**imited, **I**ncome **C**onstrained, **E**mployed.



The report shows that the total number of households living paycheck to paycheck or falling behind rose by 11% between 2019 and 2021.

The ALICE Essentials Index, which measures change over time in the cost of household essentials, projects an **18.2% increase statewide** in basic costs from 2021 to 2023. For the average Connecticut household, depending on available tax credits, **basic costs could be as high as \$39,000 annually for a single adult and \$126,000 for a family with two adults and two young children.**

[ALICE.CTUNITEDWAY.ORG](http://ALICE.CTUNITEDWAY.ORG)

Connecticut Household Survival Budget 2021		
Monthly Costs	Single Adult	2 Adults 1 Infant 1 Preschooler
Housing – Rent	\$801	\$1,111
Housing – Utilities	\$154	\$292
Child Care	-	\$2,188
Food	\$499	\$1,360
Transportation	\$357	\$834
Health Care	\$241	\$815
Technology	\$75	\$110
Miscellaneous	\$213	\$671
Tax Before Credits	\$420	\$1,505
<b>Monthly Total</b>	<b>\$2,760</b>	<b>\$8,886</b>
<b>ANNUAL TOTAL Before Credits</b>	<b>\$33,120</b>	<b>\$106,632</b>
<b>Full-Time Hourly Wage*</b>	<b>\$16.56</b>	<b>\$53.32</b>
Tax Credits (CTC and CDCTC)	-	(\$15,204)
<b>ANNUAL TOTAL with Credits</b>	<b>\$33,120</b>	<b>\$91,428</b>
<b>Full-Time Hourly Wage</b>	<b>\$16.56</b>	<b>\$45.71</b>

\*Hourly wage needed, for one worker or for two workers, to cover the Household Survival Budget working full-time (40 hours per week, 50 weeks per year).

If you have questions or would like to discuss this policy agenda, please contact:

Amy Casavina Hall | United Way of Connecticut | (860) 541-5828 or Amy.CasavinaHall@ctunitedway.org